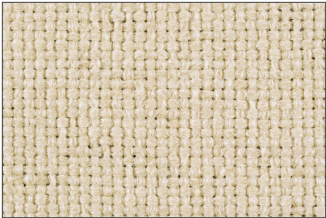
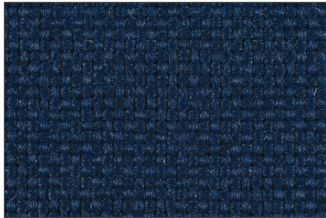


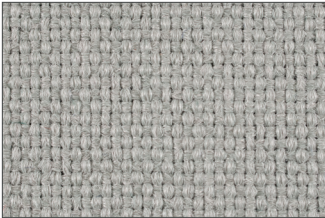
STANDARD FABRIC COLLECTION



Nutmeg
33



Indigo
35



Granite
36

STANDARD FABRIC TECHNICAL INFORMATION

Fabric is tested by an independent laboratory against standards for upholstery fabrics set by the National Association of Furniture Manufacturers. Fabric consists of 100% woven polypropylene.

Physical Characteristics

Light Fastness	Exceeds 80 hours
Tear Strength	25.2 lbs minimum warp; 24.8 lbs minimum filling
Breaking Strength	100 lbs minimum warp and filling
Abrasion	15,000 double rubs
Flame Retardancy	Flame spread rate of 5 Smoke density factor of 10 Class A standard for wall covering

Tests were conducted in accordance with the provisions of ASTM designation E84-70. Tests are identical to those specified in ANSI 2.5, UL 723, and UBC 42-1.

Vacuuming or light brushing is recommended to prevent dust and soil build-up.

Custom fabrics can be applied to MooreCo Contract boards if fabric is supplied. Call for details and upcharge information. Subject to approval.



MOORECO[™]
C O N T R A C T

MooreCo Contract
2885 Lorraine Avenue | Temple, TX 76501
p: 800.749.2258 | f: 866.888.7483
www.moorecocontract.com